



OFFICES REOPENING GUIDELINES

1

Wear face coverings in presence of others



2

Maintain social distance of at least 6-ft.



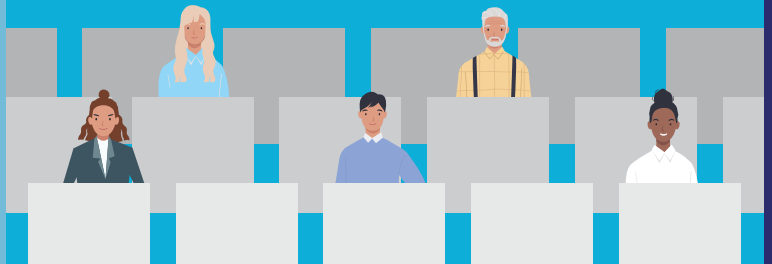
3

Keep your desk free of personal items for easy cleaning



4

Limit to 50% of office occupancy



5

Disinfect workstations upon entering office & before leaving



6

If practical, use tele- and video-conferencing while at desk

